

# AMPIVIEW® PD-1 (AS) Dig RNA Probes Set

A digoxigenin-labeled RNA probe for the *in situ* hybridization (ISH) detection of PD-1 RNA or DNA/RNA in cells and tissues

AMPIVIEW® PD-1 (AS) Dig RNA Probes are digoxigenin-labeled RNA probes targeting PD-1 nucleic acid (DNA/RNA or RNA) for *in situ* hybridization in tissues and cells. The probes are formulated in a buffered formamide solution with hybridization enhancers.

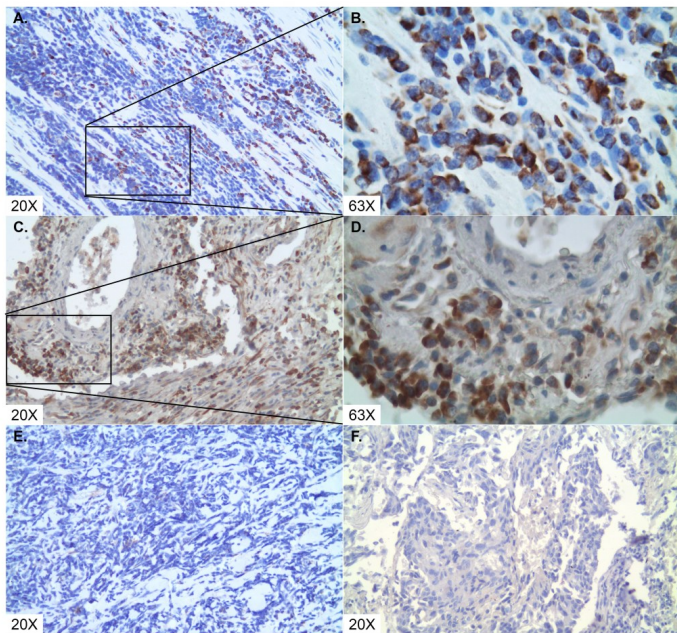
## Ordering Information

[Order Online »](#)

ENZ-GEN281-2000	2ml
-----------------	-----

## Manuals, SDS & CofA

[View Online »](#)



PD-1 (brown) was detected in A-B, E mantle lymphoma and C-D, F lung cancer tissue specimens with A-D AMPIVIEW® PD-1 (AS) Dig RNA probes and E-F AMPIVIEW® NSP Dig RNA Probes, amplified with DIGX® rabbit anti-digoxigenin linker and detected with POLYVIEW® PLUS (anti-r) HRP reagent combined with HIGHDEF® DAB chromogen/substrate and counterstained with HIGHDEF® hematoxylin.

## Handling & Storage

<b>Use/Stability</b>	Upon receipt, aliquot and store at -20°C. For long-term storage, store at -80°C. These products, under these conditions, are stable until the expiration date.
<b>Handling</b>	Allow contents to warm up to room temperature prior to use.
<b>Short Term Storage</b>	-20°C
<b>Long Term Storage</b>	-80°C
<b>Shipping</b>	Dry Ice

## Regulatory Status

RUO - Research Use Only

## Product Details

**Application** ISH (in situ hybridization)

**Application Notes** AMPIVIEW<sup>®</sup> PD-1 (AS) Dig RNA probes have been designed to detect the nucleic acid that encodes Program Cell Death Protein 1 (PD-1) in tissues and cells. PD-1 is a cell surface receptor on T cells and B cells that plays a role in the regulation of the immune system. AMPIVIEW<sup>®</sup> PD-1 (AS) Dig RNA probes are conjugated with digoxigenin and have been optimized to be amplified with DIGX<sup>®</sup> anti-digoxigenin linker and detected with POLYVIEW<sup>®</sup> PLUS combined with HIGHDEF<sup>®</sup> chromogens and counterstain to produce clear results that can be visualized with a light microscope.

**Contents** 2 x 1 mL AMPIVIEW<sup>®</sup> PD-1 (AS) Dig RNA Probes (2µg/mL)  
1 x 2 mL AMPIVIEW<sup>®</sup> Hybridization Buffer (1X)

**Technical Info / Product Notes** AMPIVIEW<sup>®</sup> PD-1 (AS) Dig RNA Probes are optimized for detection of PD-1 RNA or RNA/DNA in FFPE tissues or cells with DIGX<sup>®</sup> anti-digoxigenin linker, POLYVIEW<sup>®</sup> PLUS detection reagents combined with HIGHDEF<sup>®</sup> chromogens and counterstains (linker and detection solutions not included). Dilutions and concentration optimization can be done with AMPIVIEW<sup>®</sup> Hybridization Buffer (1X), included in this set.



ENZO LIFE SCIENCES,  
INC.  
Phone: 800.942.0430  
[info-  
usa@enzolifesciences.com](mailto:info-usa@enzolifesciences.com)

European Sales Office  
ENZO LIFE SCIENCES  
(ELS) AG  
Phone: +41 61 926 8989  
[info-  
eu@enzolifesciences.com](mailto:info-eu@enzolifesciences.com)

Belgium, The Netherlands  
& Luxembourg  
Phone: +32 3 466 0420  
[info-  
fr@enzolifesciences.com](mailto:info-fr@enzolifesciences.com)

France  
Phone: +33 472 440 655  
[info-  
fr@enzolifesciences.com](mailto:info-fr@enzolifesciences.com)

Germany  
Phone: +49 7621 5500 526  
[info-  
de@enzolifesciences.com](mailto:info-de@enzolifesciences.com)

UK & Ireland  
Phone (UK customers):  
0845 601 1488  
Phone: +44 1392 825900  
[info-  
uk@enzolifesciences.com](mailto:info-uk@enzolifesciences.com)