

AMPIVIEW® Bcl2 (AS) Dig RNA Probes Set

A digoxigenin-labeled RNA probe for the *in situ* hybridization (ISH) detection of Bcl2 RNA or DNA/RNA in cells and tissues

AMPIVIEW® Bcl2 (AS) Dig RNA Probes are digoxigenin-labeled RNA probes targeting Bcl2 nucleic acid (DNA/RNA or RNA) for *in situ* hybridization in tissues and cells. The probes are formulated in a buffered formamide solution with hybridization enhancers.

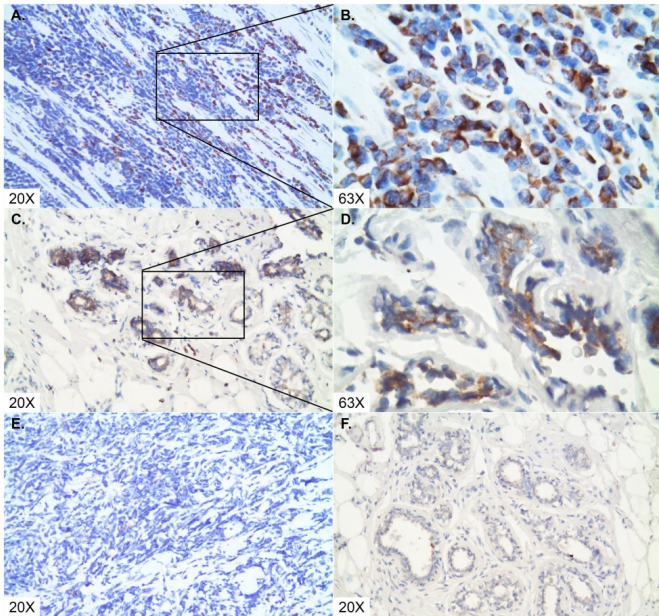
Ordering Information

[Order Online »](#)

ENZ-GEN198-2000	2ml
-----------------	-----

Manuals, SDS & CofA

[View Online »](#)



Bcl2 (brown) was detected in A-B, E mantic lymphoma and C-D, F breast cancer tissue specimens with A-D AMPIVIEW® Bcl2 (AS) Dig RNA probes and E-F AMPIVIEW® NSP Dig RNA Probes, amplified with DIGX® rabbit anti-digoxigenin linker and detected with POLYVIEW® PLUS (anti-r) HRP reagent combined with HIGHDEF® DAB chromogen/substrate and counterstained with HIGHDEF® hematoxylin.

Handling & Storage

Use/Stability	Upon receipt, aliquot and store at -20°C. For long-term storage, store at -80°C. These products, under these conditions, are stable until the expiration date.
Handling	Allow contents to warm up to room temperature prior to use.
Short Term Storage	-20°C
Long Term Storage	-80°C
Shipping	Dry Ice

Regulatory Status

RUO - Research Use Only

Product Details

Application ISH (in situ hybridization)

Application Notes

AMPIVIEW[®] Bcl2 (AS) Dig RNA probes have been designed to detect the nucleic acid that encodes B cell lymphoma 2 (Bcl2) in tissues and cells. Bcl2 is a regulatory protein that blocks apoptosis and is implicated in many cancers. AMPIVIEW[®] Bcl2 (AS) Dig RNA probes are conjugated with digoxigenin and have been optimized to be amplified with DIGX[®] anti-digoxigenin linker and detected with POLYVIEW[®] PLUS combined with HIGHDEF[®] chromogens and counterstain to produce clear results that can be visualized with a light microscope.

Contents

2 x 1 mL AMPIVIEW[®] Bcl2 (AS) Dig RNA Probes (2µg/mL)
1 x 2 mL AMPIVIEW[®] Hybridization Buffer (1X)

Technical Info / Product Notes

AMPIVIEW[®] Bcl2 (AS) Dig RNA Probes are optimized for detection of Bcl2 RNA or RNA/DNA in FFPE tissues or cells with DIGX[®] anti-digoxigenin linker, POLYVIEW[®] PLUS detection reagents combined with HIGHDEF[®] chromogens and counterstains (linker and detection solutions not included). Dilutions and concentration optimization can be done with AMPIVIEW[®] Hybridization Buffer (1X), included in this set.



ENZO LIFE SCIENCES,
INC.
Phone: 800.942.0430
info-usa@enzolifesciences.com

European Sales Office
ENZO LIFE SCIENCES
(ELS) AG
Phone: +41 61 926 8989
info-eu@enzolifesciences.com

Belgium, The Netherlands
& Luxembourg
Phone: +32 3 466 0420
info-be@enzolifesciences.com

France
Phone: +33 472 440 655
info-fr@enzolifesciences.com

Germany
Phone: +49 7621 5500 526
info-de@enzolifesciences.com

UK & Ireland
Phone (UK customers):
0845 601 1488
Phone: +44 1392 825900
info-uk@enzolifesciences.com

Last modified: April 16, 2025