

Amlodipine

Ca²⁺ channel blocker

Amlodipine is a third generation L-type calcium channel blocker with a unique spectrum of actions, over and above its antihypertensive activity which include stimulation of NO synthase, inhibition of monocyte-endothelial adhesion, inhibition of oxidative stress and sustained duration of action.

Citations: 6

[View Online »](#)

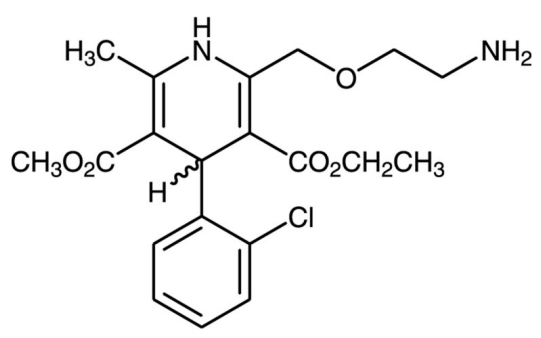
Ordering Information

[Order Online »](#)

BML-CA202-0100	100mg
----------------	-------

Manuals, SDS & CofA

[View Online »](#)



Handling & Storage

Use/Stability As indicated on product label or CoA when stored as recommended.

Long Term Storage Ambient

Shipping Ambient Temperature

Regulatory Status RUO - Research Use Only

Product Details

Appearance Almost white crystal powder

CAS 88150-42-9

Couple Target Calcium channel

Couple Type Blocker

Formula $C_{20}H_{25}ClN_2O_5$

MW 408.9

Purity ≥98% (Assay)

Solubility Soluble in methanol, DMSO (25mg/ml), 100% ethanol (25mg/ml), dimethyl formamide (25mg/ml) or chloroform.

Last modified: May 29, 2024



ENZO LIFE SCIENCES,
INC.
Phone: 800.942.0430
info-usa@enzolifesciences.com

European Sales Office
ENZO LIFE SCIENCES
(ELS) AG
Phone: +41 61 926 8989
info-eu@enzolifesciences.com

Belgium, The Netherlands
& Luxembourg
Phone: +32 3 466 0420
info-be@enzolifesciences.com

France
Phone: +33 472 440 655
info-fr@enzolifesciences.com

Germany
Phone: +49 7621 5500 526
info-de@enzolifesciences.com

UK & Ireland
Phone (UK customers):
0845 601 1488
Phone: +44 1392 825900
info-uk@enzolifesciences.com