

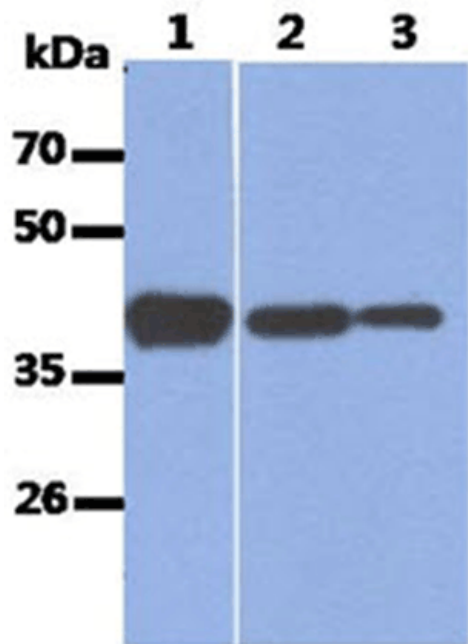
Aldolase A monoclonal antibody (AT3F9)

Aldolase A, a glycolytic enzyme, catalyzes the conversion of fructose 1, 6-bisphosphate to 3-phosphoglyceraldehyde. This ubiquitous enzyme is present as three different isozymes: aldolase A, aldolase B, and aldolase C. Research studies suggest that aldolase A expression potentially differentiates between nonneoplastic liver diseases and hepatocarcinoma. Aldolase A is found in the developing embryo and is produced in even greater amounts in adult muscle. Aldolase A expression is repressed in adult liver, kidney, and intestine and similar to aldolase C levels in brain and other nervous tissue.

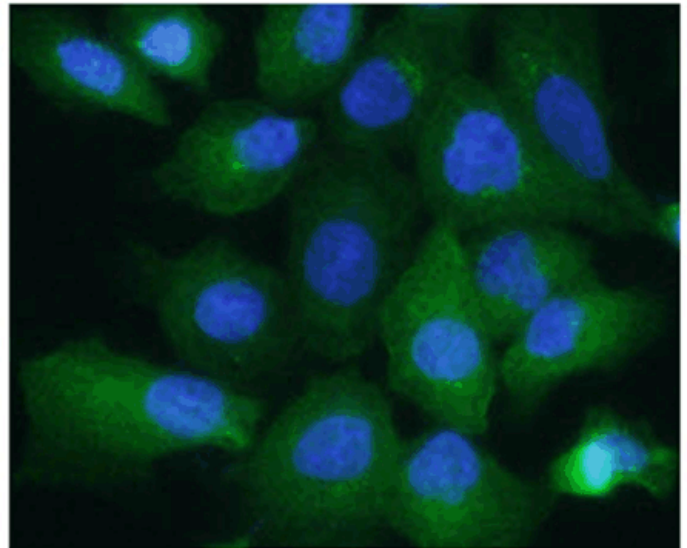
This antibody is covered by our [Worry-Free Guarantee](#).

Manuals, SDS & CofA

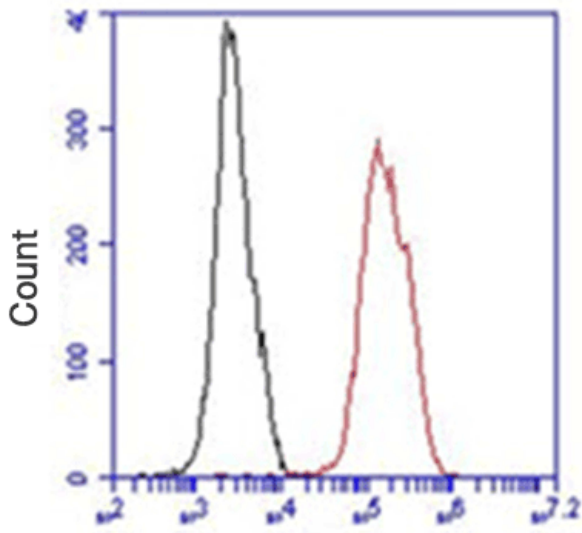
[View Online »](#)



The recombinant human ALDOA and cell lysates (40 μ g) were resolved by SDS-PAGE, transferred to PVDF membrane and probed with anti-human ALDOA antibody (1:1000). Proteins were visualized using a goat anti-mouse secondary antibody conjugated to HRP and an ECL detection system. Lane 1.: Recombinant Human ALDOA Lane 2.: HeLa cell lysate Lane 3.: HepG2 cell lysate



IF analysis of ALDOA in A549 cells, stained with DAPI (Blue) for nucleus staining and monoclonal anti-human A549 antibody (1:200) with goat anti-mouse IgG-Alexa fluor 488 conjugate (Green).



Alex 488 Anti-Aldolase A

Flow cytometry analysis of ALDOA in A549 cell line, staining at 2-5ug for 1×10^6 cells (red line). The secondary antibody used goat anti-mouse IgG Alexa fluor 488 conjugate. Isotype control antibody was mouse IgG (black line).

Handling & Storage

Handling Avoid freeze/thaw cycles.

Long Term Storage -20°C

Shipping Blue Ice

Regulatory Status RUO - Research Use Only

Product Details

Alternative Name	ALDOA, Fructose biphosphate aldolase A, Muscle-type aldolase
Application	ELISA, Flow Cytometry, ICC, IF, WB
Clone	AT3F9
Formulation	Liquid. In PBS, pH 7.4, containing 0.02% sodium azide and 10% glycerol.
Host	Mouse
Immunogen	Recombinant human Aldolase A (aa 1-364) purified from E. coli.
Isotype	IgG2ak
Purity Detail	Protein A affinity purified
Recommendation Dilutions/Conditions	Western Blot (1:1,000)Flow Cytometry (1:200)ICC/IF (1:200)Suggested dilutions/conditions may not be available for all applications.Optimal conditions must be determined individually for each application.
Species Reactivity	Human
UniProt ID	P04075
Worry-free Guarantee	This antibody is covered by our Worry-Free Guarantee

Last modified: May 29, 2024



ENZO LIFE SCIENCES,
INC.
Phone: 800.942.0430
[info-
usa@enzolifesciences.com](mailto:info-usa@enzolifesciences.com)

European Sales Office
ENZO LIFE SCIENCES
(ELS) AG
Phone: +41 61 926 8989
[info-
eu@enzolifesciences.com](mailto:info-eu@enzolifesciences.com)

Belgium, The Netherlands
& Luxembourg
Phone: +32 3 466 0420
[info-
be@enzolifesciences.com](mailto:info-be@enzolifesciences.com)

France
Phone: +33 472 440 655
[info-
fr@enzolifesciences.com](mailto:info-fr@enzolifesciences.com)

Germany
Phone: +49 7621 5500 526
[info-
de@enzolifesciences.com](mailto:info-de@enzolifesciences.com)

UK & Ireland
Phone (UK customers):
0845 601 1488
Phone: +44 1392 825900
[info-
uk@enzolifesciences.com](mailto:info-uk@enzolifesciences.com)