

ALDH1 monoclonal antibody (5G9E6C9)

This antibody is a useful tool to study cancer biology, stem cell characteristics, and therapeutic resistance.

Aldehyde dehydrogenase 1 (ALDH1) is a family of enzymes involved in cellular detoxification and the metabolism of aldehydes to carboxylic acids. ALDH1 is considered a marker of stem cells, particularly in cancer research, where its high expression is linked to cancer stem cell populations.

This antibody is covered by our [Worry-Free Guarantee](#).

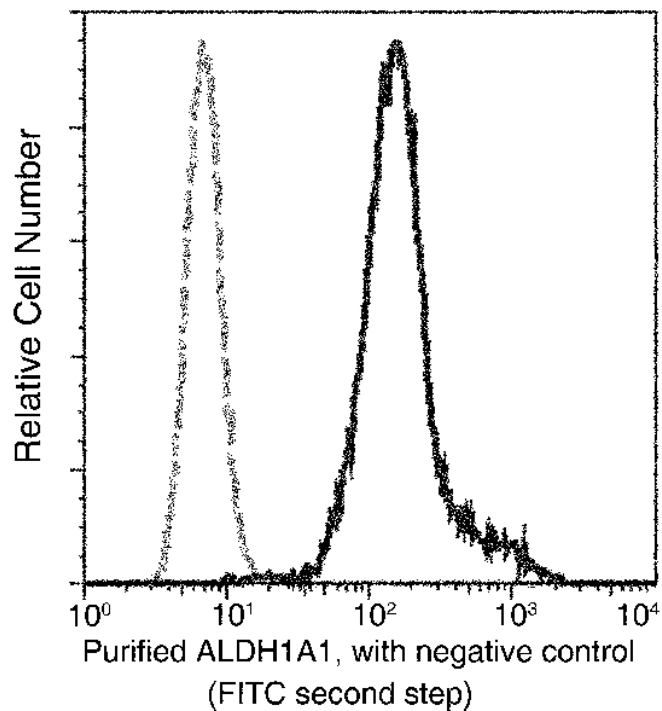
Ordering Information

[Order Online »](#)

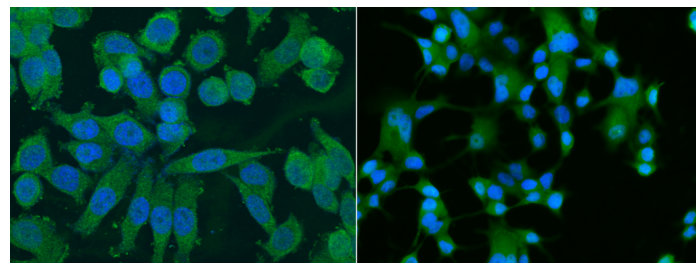
| | |
|------------------|-------|
| ENZ-ABS1028-0100 | 100µl |
|------------------|-------|

Manuals, SDS & CofA

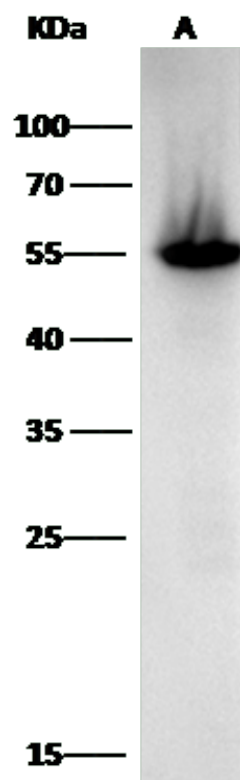
[View Online »](#)



Flow cytometric analysis of Human ALDH1A1 on A549 cells. Cells were treated according to manufacturer's manual (BD Pharmingen™ Cat. No. 554714), stained with purified anti-Human ALDH1A1, then a FITC-conjugated second step antibody. The histogram were derived from gated events with the forward and side light-scatter characteristics of intact cells.



Immunofluorescence staining of Human ALDH1A1 in MCF7 or SKBR3 cells. Cells were fixed with 4% PFA, permeabilized with 1% Triton X-100 in PBS, blocked with 10% serum, and incubated with mouse anti-Human ALDH1A1 monoclonal antibody (1:60). Then cells were stained with the Alexa Fluor® 488-conjugated Goat Anti-mouse IgG secondary antibody (left panel, captured by laser confocal scanning microscope; right panel, captured by fluorescence microscope), counter stained with DAPI (blue). Positive staining was localized to cytoplasm.



Anti-ALDH1A1 mouse monoclonal antibody at 1:500

dilution

Lane A: HepG2 Whole Cell Lysate

Lysates/proteins at 30 µg per lane.

Handling & Storage

Handling Avoid freeze-thaw cycles.

Long Term Storage -20°C

Shipping Blue Ice

Regulatory Status RUO - Research Use Only

Product Details

Alternative Name Aldehyde dehydrogenase 1, ALDH1A1

Application ELISA, Flow Cytometry, ICC, IF, WB

Clone 5G9E6C9

Formulation Liquid. 0.2 µm filtered solution in PBS. Preservative free. Carrier-free.

Host Mouse

Immunogen Recombinant human ALDH1.

Isotype IgG

Purity Detail Protein A purified.

Recommendation Dilutions/Conditions ELISA (1:1'000-1:2'000)Western Blot (1:500-1:2'000)Immunocytochemistry / Immunofluorescence (1:20-1:100)Flow Cytometry (1:25-1:100)Suggested dilutions/conditions may not be available for all applications.Optimal conditions must be determined individually for each application.

Species Reactivity Human

Worry-free Guarantee This antibody is covered by our [Worry-Free Guarantee](#)



ENZO LIFE SCIENCES,
INC.
Phone: 800.942.0430
[info-](mailto:info-usa@enzolifesciences.com)
usa@enzolifesciences.com

European Sales Office
ENZO LIFE SCIENCES
(ELS) AG
Phone: +41 61 926 8989
[info-](mailto:info-eu@enzolifesciences.com)
eu@enzolifesciences.com

Belgium, The Netherlands
& Luxembourg
Phone: +32 3 466 0420
[info-](mailto:info-fr@enzolifesciences.com)
fr@enzolifesciences.com

France
Phone: +33 472 440 655
[info-](mailto:info-fr@enzolifesciences.com)
fr@enzolifesciences.com

Germany
Phone: +49 7621 5500 526
[info-](mailto:info-de@enzolifesciences.com)
de@enzolifesciences.com

UK & Ireland
Phone (UK customers):
0845 601 1488
Phone: +44 1392 825900
[info-](mailto:info-uk@enzolifesciences.com)
uk@enzolifesciences.com

Last modified: October 7, 2024