

# AAF-CMK

## Tripeptidyl peptidase inhibitor

A serine protease inhibitor which irreversibly inhibits tripeptidyl peptidase II (TPPII), a giant protease which may substitute for some proteasome functions, and reversibly inhibits TPPI. Shows only marginal inhibition of the chymotrypsin-like activity of the proteasome.

Citations: 1

[View Online »](#)

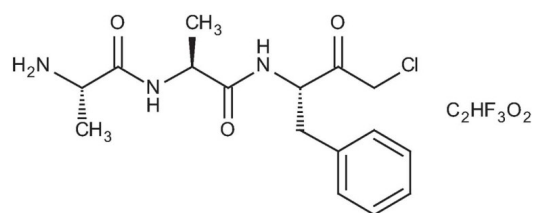
## Ordering Information

[Order Online »](#)

BML-PI123-0025	25mg
----------------	------

## Manuals, SDS & CofA

[View Online »](#)



## Handling & Storage

Use/Stability	As indicated on product label or CoA when stored as recommended.
Long Term Storage	-20°C
Shipping	Ambient Temperature

**Regulatory Status** RUO - Research Use Only

## Product Details

Alternative Name	Ala-Ala-Phe-CMK
CAS	184901-82-4
MW	453.9
Purity	≥95% (TLC)
Sequence	Ala-Ala-Phe-chloromethylketone·TFA

Last modified: May 29, 2024



ENZO LIFE SCIENCES,  
INC.  
Phone: 800.942.0430  
[info-usa@enzolifesciences.com](mailto:info-usa@enzolifesciences.com)

European Sales Office  
ENZO LIFE SCIENCES  
(ELS) AG  
Phone: +41 61 926 8989  
[info-eu@enzolifesciences.com](mailto:info-eu@enzolifesciences.com)

Belgium, The Netherlands  
& Luxembourg  
Phone: +32 3 466 0420  
[info-be@enzolifesciences.com](mailto:info-be@enzolifesciences.com)

France  
Phone: +33 472 440 655  
[info-fr@enzolifesciences.com](mailto:info-fr@enzolifesciences.com)

Germany  
Phone: +49 7621 5500 526  
[info-de@enzolifesciences.com](mailto:info-de@enzolifesciences.com)

UK & Ireland  
Phone (UK customers):  
0845 601 1488  
Phone: +44 1392 825900  
[info-uk@enzolifesciences.com](mailto:info-uk@enzolifesciences.com)