

7-HC-6-heptenoate

Phospholipase substrate

PLA₂ fluorogenic substrate for use in assays without phospholipid and Ca²⁺. For use with purified enzyme, as this substrate is nonspecific. Ideal for drug discovery, HTS, and similar applications. Ex.: 360 nm, Em.: 460 nm

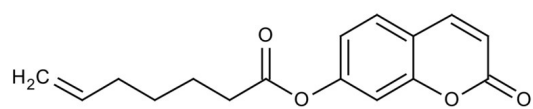
Ordering Information

[Order Online »](#)

BML-ST501-0010	10mg
----------------	------

Manuals, SDS & CofA

[View Online »](#)



Handling & Storage

Use/Stability	As indicated on product label or CoA when stored as recommended. Store, as supplied, at room temperature for up to 1 year. Store solutions at -20°C for up to 3 months.
Long Term Storage	Ambient
Shipping	Ambient Temperature

Regulatory Status RUO - Research Use Only

Product Details

Appearance	White solid.
Couple Target	Phospholipase, PLA
Couple Type	Substrate
Formula	$C_{16}H_{16}O_4$
MW	272.3
Purity	≥98% (TLC)
Solubility	Soluble in DMSO (50 mg/ml) or ethanol (35 mg/ml).



ENZO LIFE SCIENCES,
INC.
Phone: 800.942.0430
[info-
usa@enzolifesciences.com](mailto:info-usa@enzolifesciences.com)

European Sales Office
ENZO LIFE SCIENCES
(ELS) AG
Phone: +41 61 926 8989
[info-
eu@enzolifesciences.com](mailto:info-eu@enzolifesciences.com)

Belgium, The Netherlands
& Luxembourg
Phone: +32 3 466 0420
[info-
be@enzolifesciences.com](mailto:info-be@enzolifesciences.com)

France
Phone: +33 472 440 655
[info-
fr@enzolifesciences.com](mailto:info-fr@enzolifesciences.com)

Germany
Phone: +49 7621 5500 526
[info-
de@enzolifesciences.com](mailto:info-de@enzolifesciences.com)

UK & Ireland
Phone (UK customers):
0845 601 1488
Phone: +44 1392 825900
[info-
uk@enzolifesciences.com](mailto:info-uk@enzolifesciences.com)