

3,4

Dichloroisocoumarin

Protease inhibitor

A potent irreversible mechanism based serine protease inhibitor. Inhibits granzymes A, B, and H, cathepsin G, neutrophil elastase and proteinase 3. Inhibits activation of neutral sphingomyelinase and apoptosis triggered by daunorubicin as well as camptothecin-induced apoptosis in HL-60 cells. Inhibits migration of eosinophils through basement membrane components *in vitro*.

Citations: 1

[View Online »](#)

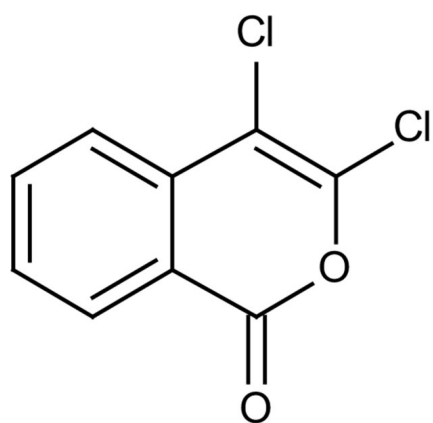
Ordering Information

[Order Online »](#)

BML-PI110-0010	10mg
----------------	------

Manuals, SDS & CofA

[View Online »](#)



Handling & Storage

Use/Stability As indicated on product label or CoA when stored as recommended.

Long Term Storage +4°C

Shipping Ambient Temperature

Regulatory Status RUO - Research Use Only

Product Details

Appearance White lyophilized solid.

CAS 51050-59-0

Couple Target Cathepsin, Elastase, Granzyme, Proteinase

Couple Type Inhibitor

Formula $C_9H_4Cl_2O_2$

MW 215.0

Purity ≥98% (Elemental Analysis)

Last modified: May 29, 2024



ENZO LIFE SCIENCES,
INC.
Phone: 800.942.0430
[info-
usa@enzolifesciences.com](mailto:info-usa@enzolifesciences.com)

European Sales Office
ENZO LIFE SCIENCES
(ELS) AG
Phone: +41 61 926 8989
[info-
eu@enzolifesciences.com](mailto:info-eu@enzolifesciences.com)

Belgium, The Netherlands
& Luxembourg
Phone: +32 3 466 0420
[info-
be@enzolifesciences.com](mailto:info-be@enzolifesciences.com)

France
Phone: +33 472 440 655
[info-
fr@enzolifesciences.com](mailto:info-fr@enzolifesciences.com)

Germany
Phone: +49 7621 5500 526
[info-
de@enzolifesciences.com](mailto:info-de@enzolifesciences.com)

UK & Ireland
Phone (UK customers):
0845 601 1488
Phone: +44 1392 825900
[info-
uk@enzolifesciences.com](mailto:info-uk@enzolifesciences.com)