

# 2',2'',2''',2''''-Tetra-F-c-tetradAMP

Fluorinated version of the bacterial second messenger c-tetraAMP

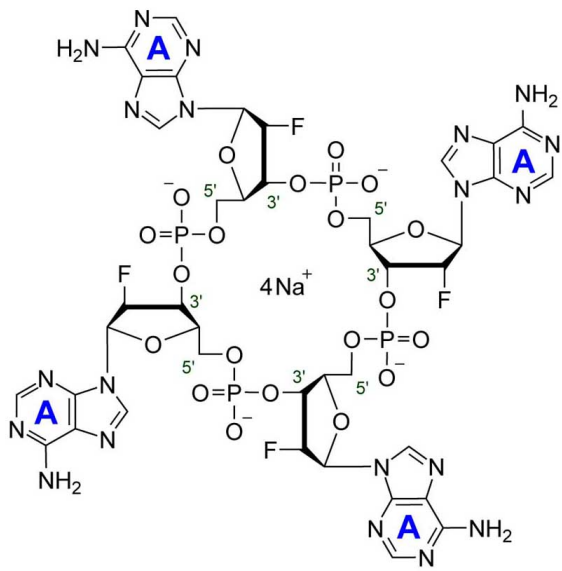
2',2'',2''',2''''-Tetra-F-c-tetradAMP is an analogue of the bacterial second messenger c-tetraAMP (Cat. No.: BLG-C335) containing fluoro modifications in all ribose 2'-positions which are expected to make the compound resistant to degradation by nucleases.

*BLG-T062-005 (5 x 0.1 µmol pack size) is not sold in the U.S. or Canada. Please [contact us](#) for available options.*

## Ordering Information [Order Online »](#)

BLG-T062-001	0.1µmol
BLG-T062-005	5x0.1µmol

## Manuals, SDS & CofA [View Online »](#)



## Handling & Storage

Long Term Storage -20°C

Shipping Ambient Temperature

**Regulatory Status** RUO - Research Use Only

## Product Details

**Alternative Name** 2'-,2"-,2"',2''''-Tetradeoxy- 2'-,2",2"',2''''- tetrafluoro-cyclic tetraadenosine monophosphate . sodium salt, cFA4, Tetrafluoro-c-tetraAMP

**Appearance** Crystallized or lyophilized solid.

**Couple Type** Modified nucleotides

**Excitation Maximum** 259 nm

**Formula**  $C_{40}H_{44}F_4N_{20}O_{20}P_4$  (free acid)

**MW** 1324 (free acid)

**Purity** > 95% HPLC

**Technical Info / Product Notes** For the Original Manufacturer's data sheet please [click here](#).



ENZO LIFE SCIENCES,  
INC.  
Phone: 800.942.0430  
[info-usa@enzolifesciences.com](mailto:info-usa@enzolifesciences.com)

European Sales Office  
ENZO LIFE SCIENCES  
(ELS) AG  
Phone: +41 61 926 8989  
[info-eu@enzolifesciences.com](mailto:info-eu@enzolifesciences.com)

Belgium, The Netherlands  
& Luxembourg  
Phone: +32 3 466 0420  
[info-be@enzolifesciences.com](mailto:info-be@enzolifesciences.com)

France  
Phone: +33 472 440 655  
[info-fr@enzolifesciences.com](mailto:info-fr@enzolifesciences.com)

Germany  
Phone: +49 7621 5500 526  
[info-de@enzolifesciences.com](mailto:info-de@enzolifesciences.com)

UK & Ireland  
Phone (UK customers):  
0845 601 1488  
Phone: +44 1392 825900  
[info-uk@enzolifesciences.com](mailto:info-uk@enzolifesciences.com)