

2'-AHC-cCMP-Agarose

The putative second messenger cyclic CMP immobilized on agarose by an aminoethylcarbamoyl spacer attached to the ribose 2'-position of the ligand. The gel can be used for affinity chromatography of cCMP-responsive proteins, such as protein kinases, phosphodiesterases and others.

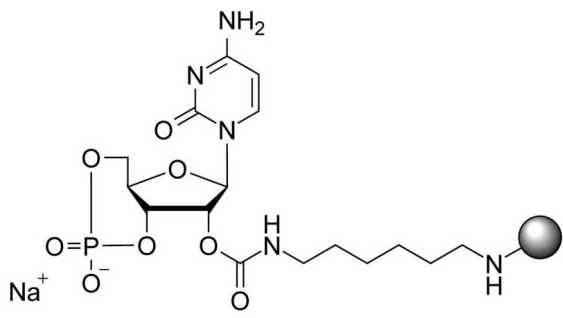
Ordering Information

[Order Online »](#)

BLG-A158-06	0.6ml
BLG-A158-25	2.5ml
BLG-A158-60	6ml

Manuals, SDS & CofA

[View Online »](#)



Handling & Storage

Long Term Storage +4°C

Shipping Ambient Temperature

Regulatory Status RUO - Research Use Only

Product Details

Alternative Name 2'-O-(2- Aminoethylcarbamoyl)cytidine-3',5'-cyclic monosposphate, immobilized on agarose gel

Couple Type Modified nucleotides



ENZO LIFE SCIENCES,
INC.
Phone: 800.942.0430
info-usa@enzolifesciences.com

European Sales Office
ENZO LIFE SCIENCES
(ELS) AG
Phone: +41 61 926 8989
info-eu@enzolifesciences.com

Belgium, The Netherlands
& Luxembourg
Phone: +32 3 466 0420
info-be@enzolifesciences.com

France
Phone: +33 472 440 655
info-fr@enzolifesciences.com

Germany
Phone: +49 7621 5500 526
info-de@enzolifesciences.com

UK & Ireland
Phone (UK customers):
0845 601 1488
Phone: +44 1392 825900
info-uk@enzolifesciences.com