

# $\beta$ -Lapachone

Topoisomerase inhibitor

Novel DNA topoisomerase I inhibitor. Unlike camptothecin,  $\beta$ -lapachone does not stabilize the cleavable complex, indicating a novel mode of action. Induces apoptosis in HL-60 and human prostate cancer cells via a p53-independent mechanism and blocks the cell cycle at  $G_0/G_1$ .

Citations: 3

[View Online »](#)

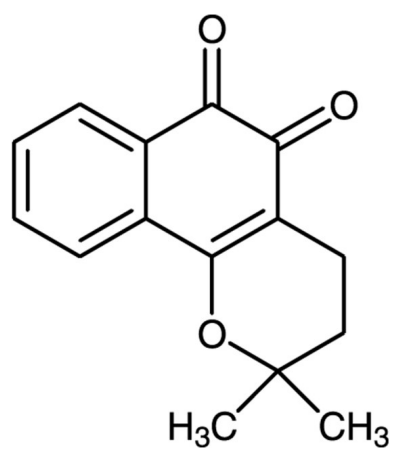
Ordering Information

[Order Online »](#)

BML-GR308-0005	5mg
----------------	-----

Manuals, SDS & CofA

[View Online »](#)



## Handling & Storage

**Use/Stability** As indicated on product label or CoA when stored as recommended.

**Long Term Storage** -20°C

**Shipping** Ambient Temperature

**Regulatory Status** RUO - Research Use Only

## Product Details

**Appearance** Orange to brown solid.

**CAS** 4707-32-8

**Couple Target** Topoisomerase

**Couple Type** Inhibitor

**Formula**  $C_{15}H_{14}O_3$

**Identity** Determined by NMR.

**MW** 242.27

**Purity** ≥98% (HPLC)

**Solubility** Soluble in DMSO (25mg/ml) or ethanol (20mg/ml).

**Last modified: May 29, 2024**



ENZO LIFE SCIENCES,  
INC.  
Phone: 800.942.0430  
[info-  
usa@enzolifesciences.com](mailto:info-usa@enzolifesciences.com)

European Sales Office  
ENZO LIFE SCIENCES  
(ELS) AG  
Phone: +41 61 926 8989  
[info-  
eu@enzolifesciences.com](mailto:info-eu@enzolifesciences.com)

Belgium, The Netherlands  
& Luxembourg  
Phone: +32 3 466 0420  
[info-  
be@enzolifesciences.com](mailto:info-be@enzolifesciences.com)

France  
Phone: +33 472 440 655  
[info-  
fr@enzolifesciences.com](mailto:info-fr@enzolifesciences.com)

Germany  
Phone: +49 7621 5500 526  
[info-  
de@enzolifesciences.com](mailto:info-de@enzolifesciences.com)

UK & Ireland  
Phone (UK customers):  
0845 601 1488  
Phone: +44 1392 825900  
[info-  
uk@enzolifesciences.com](mailto:info-uk@enzolifesciences.com)