

# $\alpha$ -Synuclein (human), (recombinant)

$\alpha$ -synuclein is a major component of Parkinson's disease aggregates and is implicated in the pathogenesis of Parkinson's disease and related neurodegenerative disorders.  $\alpha$ -synuclein accumulates in the brains of sporadic Parkinson's disease patients as a major component of Lewy bodies, which are intraneuronal cytoplasmic inclusions characteristic of Parkinson's disease.  $\alpha$ -synuclein appears to associate with other proteins that aggregate and is found in  $\beta$ -amyloid plaques and neuritic tangles in Alzheimer's disease.

Citations: 2

[View Online »](#)

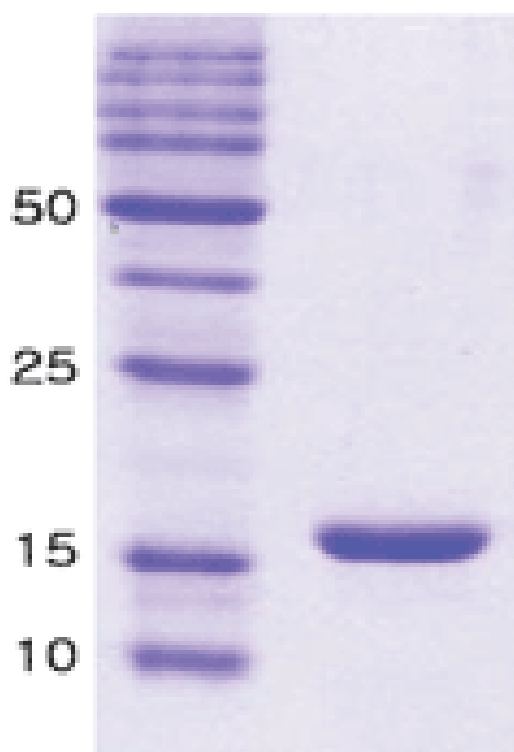
## Ordering Information

[Order Online »](#)

ALX-201-265-C100	100 $\mu$ g
------------------	-------------

## Manuals, SDS & CofA

[View Online »](#)



**Figure:** 14% SDS-PAGE of  $\alpha$ -Synuclein (human) (rec.)  
(Prod. No. [ALX-201-265](#)).", $\alpha$ -Synuclein (human)

## Handling & Storage

**Handling** Avoid freeze/thaw cycles.

**Long Term Storage** -20°C

**Shipping** Blue Ice

**Regulatory Status** RUO - Research Use Only

## Product Details

**Concentration** 1mg/ml.

**Endotoxin Content** <1.0EU/μg of protein (LAL method).

**Formulation** Liquid. In 20mM TRIS-HCl, pH 7.5, containing 0.1M sodium chloride and 1mM magnesium dichloride.

**MW** ~14.5kDa (MW in SDS-PAGE will be shifted up).

**Purity** ≥95% (SDS-PAGE)

**Source** Produced in *E. coli*.

**UniProt ID** P37840



ENZO LIFE SCIENCES,  
INC.  
Phone: 800.942.0430  
[info-  
usa@enzolifesciences.com](mailto:info-usa@enzolifesciences.com)

European Sales Office  
ENZO LIFE SCIENCES  
(ELS) AG  
Phone: +41 61 926 8989  
[info-  
eu@enzolifesciences.com](mailto:info-eu@enzolifesciences.com)

Belgium, The Netherlands  
& Luxembourg  
Phone: +32 3 466 0420  
[info-  
be@enzolifesciences.com](mailto:info-be@enzolifesciences.com)

France  
Phone: +33 472 440 655  
[info-  
fr@enzolifesciences.com](mailto:info-fr@enzolifesciences.com)

Germany  
Phone: +49 7621 5500 526  
[info-  
de@enzolifesciences.com](mailto:info-de@enzolifesciences.com)

UK & Ireland  
Phone (UK customers):  
0845 601 1488  
Phone: +44 1392 825900  
[info-  
uk@enzolifesciences.com](mailto:info-uk@enzolifesciences.com)